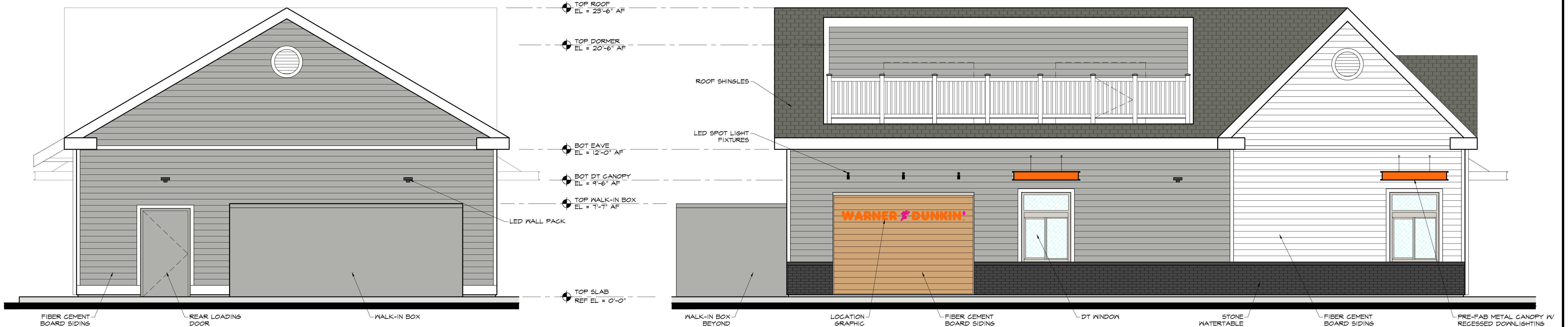


4 PROPOSED NORTH ELEVATION
SCALE: 1/4" = 1'-0"

3 PROPOSED WEST ELEVATION
SCALE: 1/4" = 1'-0"



2 PROPOSED SOUTH ELEVATION
SCALE: 1/4" = 1'-0"

1 PROPOSED EAST ELEVATION
SCALE: 1/4" = 1'-0"